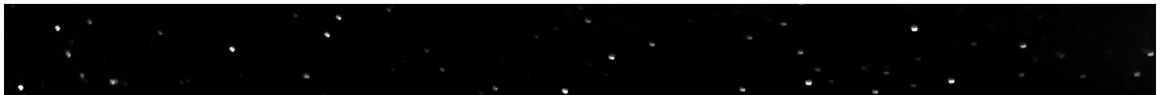


Photo by Brian J. Smith



Private Events



Situated on the Thea Foss Waterway and centrally located near downtown Tacoma, Museum of Glass is an ideal location for your next business meeting. From its contemporary art and architecture, to the Hot Shop where visitors can watch artists blow and shape works from molten glass, the Museum's state-of-the-art facility offers a truly unique venue for your event.



ALL SPACES INCLUDE:

- An on-site venue coordinator
- Private access to the Museum's galleries
- Security and janitorial services

AV SERVICES

Audio visual services are available and staffed by our professional on-site technicians to ensure everything goes smoothly.

Venue Options

GRAND HALL

The Museum's impressive Grand Hall, with its unique design in glass, steel, and concrete, is an elegant and flexible space for receptions and formal dinners. The fee for the Grand Hall includes tables and chairs for up to 150 guests.

6,900 square feet

Capacity is 300 seated at rounds/500 standing

OUTDOOR PLAZAS

Three large plazas offer stunning views of the cityscape, Thea Foss Waterway, and Mount Rainier. Your guests can easily circulate between the plazas and the interior of the Museum.

Main: 3,900 square feet

Mezzanine: 4,200 square feet

Rooftop: 5,400 square feet

HOT SHOP

Inside the Museum's 90-foot tall cone is the Hot Shop Amphitheater, a working glass studio where your guests can watch as artists create works from molten glass. Rental of the Hot Shop includes a team of glassblowers for the duration of the evening.

Seating for 138, capacity is 200

THEATER

The Museum's theater provides comfortable seating and a stage, ideal for advanced multimedia presentations, films, lectures, and meetings. The theater is equipped with Wi-Fi and a large projection screen.

Capacity is 196



Photo by Chuck Lyden



Contact

John Ferguson

p 253.284.4711

e jferguson@museumofglass.org

Or visit

museumofglass.org

